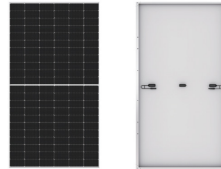


JA solar : Solar Panel



Part Number	jsr-jam72s20-460mr	jsr-jam72s30-550mr
Technology	Monocrystalline	Monocrystalline
	Half-cell	Half-cell
Capacity (W)	460	550
Vmp : Voltage at max power (V)	42.13	41.96
Voc : Open Circuit Voltage (V)	50.01	49.90
Imp : Current at max power (A)	10.92	13.11
Isc : Short Circuit Current (A)	11.45	14.00
Module Efficiency (%)	2112 x 1052 x 35 mm	2279 x 1134 x 35 mm
Dimension	24.5 kg	28.6 kg
Weight	20.70	21.30
Warranty (Year)	12Y/25Y	12Y/25Y
SRP (inc. VAT)	6,630	7,930

Sungrow : Solar Inverter 1ph



Part Number	SGW-SG3K-S	SGW-SG5K-D	SGW-S100
Technology	On-Grid	On-Grid	Smart Energy Meter 1ph
Capacity (W)	3k	5k	-
Max.PV input power (kW)	-	-	-
Max.PV input Voltage (V)	600	600	-
Min.PV input Voltage/Startup Volt (V)	90 / 120	90 / 120	-
Nominal input Voltage (V)	360.00	360.00	-
MPP Volt range (V)	90 - 560	90 - 560	-
MPP Volt range for nominal power (V)	310 - 480	260 - 480	-
MPPTs	1	2	-
PV Strings / MPPT	1	1	-
Total PV Strings	1	2	-
Max.PV input current per MPPT (A)	10	10	-
Max.PV short-circuit current per MPPT (A)	12	12	-
Communication	Wifi / Ethernet (Optional)	Wifi / Ethernet (Optional)	RS485
Dimensions (W x H x D)	300 x 370 x 125 mm	360 x 390 x 133 mm	18 x 117 x 65 mm
Weight (kg)	8.50	11.50	0.20
Warranty (Year)*	5Y	5Y	1Y
SRP (inc. VAT)	25,900	31,600	5,900

Sungrow : Solar Inverter 3ph



*สามารถซื้อ:ระยะเวลาประกันเพิ่มขึ้นเป็น10ปี ได้ โปรดติดต่อฝ่ายขาย

Part Number	SGW-SG5.0RT	SGW-SG10RT
Technology	On-Grid	On-Grid
Capacity (W)	5k	10k
Max.PV input power (kW)	7.5	15.0
Max.PV input Voltage (V)	1100	1100
Min.PV input Voltage/Startup Volt (V)	180	180
Nominal input Voltage (V)	600	600
MPP Volt range (V)	160 - 1000	160 - 1000
MPP Volt range for nominal power (V)	550 - 850	550 - 850
MPPTs	2	2
PV Strings / MPPT	1	2 / 1
Total PV Strings	2	3
Max.PV input current per MPPT (A)	12.5	25 / 12.5
Max.PV short-circuit current per MPPT (A)	16	32 / 16
Communication	WLAN, Ethernet, RS485, DI,DO	WLAN, Ethernet, RS485, DI,DO
Dimensions (W x H x D)	370 x 480 x 195 mm	370 x 480 x 195 mm
Weight (kg)	18.00	18.00
Warranty (Year)*	5Y	5Y
SRP (inc. VAT)	59,400	80,200

Sungrow : Solar Inverter 3ph



*สามารถซื้ออะไหล่การรับประกันเพิ่มเป็น10ปี ได้ โปรดติดต่อฝ่ายขาย

Part Number	SGW-SG15RT	SGW-SG20RT	SGW-DTSD1352C/1-6A
Technology	On-Grid	On-Grid	Smart Energy Meter 3ph
Capacity (W)	15k	20k	-
Max.PV input power (kW)	22.5	30.0	-
Max.PV input Voltage (V)	1100	1100	-
Min.PV input Voltage/Startup Volt (V)	180	180	-
Nominal input Voltage (V)	600	600	-
MPP Volt range (V)	160 - 1000	160 - 1000	-
MPP Volt range for nominal power (V)	550 - 850	550 - 850	-
MPPTs	2	2	-
PV Strings / MPPT	2	2	-
Total PV Strings	4	4	-
Max.PV input current per MPPT (A)	25	25	-
Max.PV short-circuit current per MPPT (A)	30	30	-
Communication	WLAN, Ethernet, RS485, DI, DO		RS485
Dimensions (W x H x D)	370 x 480 x 195 mm		126 x 91 x 74 mm
Weight (kg)	21.00		0.35
Warranty (Year)*	5Y	5Y	1Y
SRP (inc. VAT)	93,800	107,300	6,800

Huawei : Solar Inverter 1ph



Part Number	HUW-SUN2000-3KTLL1	HUW-2000-5KTLL1	HUW-DDSU666-H
Technology	Hybrid	Hybrid	Smart Energy Meter 1ph
Capacity (W)	3k	5k	-
Max.PV input power (kW)	4.5	7.5	-
Max.PV input Voltage (V)	600	600	-
Min.PV input Voltage/Startup Volt (V)	100	100	-
Nominal input Voltage (V)	360	360	-
MPP Volt range (V)	90 - 560	90 - 560	-
MPP Volt range for nominal power (V)	260 - 480	260 - 480	-
MPPTs	2	2	-
PV Strings / MPPT	1	1	-
Total PV Strings	2	2	-
Max.PV input current per MPPT (A)	12.5	12.5	-
Max.PV short-circuit current per MPPT (A)	18	18	-
Communication	RS485, WLAN via inverter built-in WLAN module Ethernet via Smart Dongle-WLAN-FE (Optional); 4G / 3G / 2G via Smart Dongle-4G (Optional)		RS485
Dimensions (W x H x D)	365 x 365 x 156 mm		100 x 36 x 65.5 mm
Weight (kg)	12.00		1.20
Warranty (Year)	10Y	10Y	2Y
SRP (inc. VAT)	30,800	37,900	2,500

Huawei : Solar Inverter 3ph



Part Number	HUW-2000-5KTLM1	HUW-2000-10KTLM1
Technology	Hybrid	Hybrid
Capacity (W)	5k	10k
Max.PV input power (kW)	7.5	15
Max.PV input Voltage (V)	1100	1100
Min.PV input Voltage/Startup Volt (V)	200	200
Nominal input Voltage (V)	600	600
MPP Volt range (V)	140 - 980	140 - 980
MPP Volt range for nominal power (V)	470 - 850	470 - 850
MPPTs	2	2
PV Strings / MPPT	1	1
Total PV Strings	2	2
Max.PV input current per MPPT (A)	11	11
Max.PV short-circuit current per MPPT (A)	15	15
Communication	RS485; WLAN/Ethernet via Smart Dongle-WLAN-FE; 4G / 3G / 2G via Smart Dongle-4G (Optional)	
Dimensions (W x H x D)	525 x 470 x 146.5 mm	
Weight (kg)	10Y	17.00
Warranty (Year)	10Y	10Y
SRP (inc. VAT)	43,500	65,800



Part Number	HUW-2000-15KTLM2	HUW-2000-20KTLM2	HUW-DTSU666-H-250A
Technology	On-grid	On-grid	Smart Energy Meter 3ph
Capacity (W)	15k	20k	-
Max.PV input power (kW)	22.5	30	-
Max.PV input Voltage (V)	1080	1080	-
Min.PV input Voltage/Startup Volt (V)	200	200	-
Nominal input Voltage (V)	600	600	-
MPP Volt range (V)	160 - 950	160 - 950	-
MPP Volt range for nominal power (V)	480 - 850	480 - 850	-
MPPTs	2	2	-
PV Strings / MPPT	2	2	-
Total PV Strings	4	4	-
Max.PV input current per MPPT (A)	22	22	-
Max.PV short-circuit current per MPPT (A)	30	30	-
Communication	RS485; WLAN/Ethernet via Smart Dongle-WLAN-FE (Optional) 4G / 3G / 2G via Smart Dongle-4G (Optional)		RS485
Dimensions (W x H x D)	525 x 470 x 262 mm		100 x 72 x 65.5 mm
Weight (kg)	10Y	25.00	1.50
Warranty (Year)	10Y	10Y	2Y
SRP (inc. VAT)	80,000	84,900	4,900